

Rockwell Collins Craft Club

May 2010

This Month
at a Glance

It's normally Lilac Season in Cedar Rapids, but with all that early warm weather, my lilacs were all done at least a week before they normally are. Lily of the Valley too. And then the rhubarb was late! But I'm making up for it. I've baked rhubarb dessert at least 8 times in the past few weeks. I bring it to work and email my 'rhubarb lovers' email list and it's gone in about twenty minutes.

Next Meeting: Wed May 19 at 4:30 Main Plant Cafeteria
<i>Sewing Expo Info</i> Page 1 & 4
<i>Craft Clubbers</i> <i>Birthdays!</i> Page 2
<i>Rockwell Craft Fair info</i> Page 2
<i>Recipe</i> Page 3

☀ Last month we made lots of cards for the Gems of Hope. I will forward emails from them regarding their workshop locations and dates in case you are interested in working more with them. We certainly had some beautiful paper to work with.

☀ Our charity this month will be a new local Food Bank at Neighborhood Church. They are operating in conjunction with Witwer Senior Center. They will have medical supplies and food for those over the age of 60. So if you have any crutches, walkers, wheel chairs, leg braces, etc. cluttering up the attic or basement, bring them along with some groceries to donate to this new group.

☀ Our charity for the last two months was a group that is taking things to Walter Reed Army Hospital. We will get a report from them and pass that information on to you.

☀ So far there are five of us that have committed to going to the Sewing Expo at UW Platteville On Saturday, June 5th. If you are interested, talk to Shari or Darlene. More info on page 2.

☀ Our craft this month will be making envelopes. We have 3 different size templates and lots of interesting papers to work with. If you have any old calendars you don't need, bring those to use too. If you'd like to bring your own paper scissors, you can. Otherwise, we have some in the cabinet.



I received the following information from Cindy Schwarz. Please note that you must be a Rockwell Employee or Retiree or a spouse of a current or retired employee to participate.

Rockwell All-Employee Craft Fair 2010



Happy Birthday!

May

1st—Shari Burns

7th—Patricia Meyer

22nd—Mary Zoll

June

1st—Trudy Albaugh

4th — Sabrina Hootman

For this year's 2010 registration, we have set aside two (2) days for in-person open registration. All paperwork will be available at that time.

Tags will be available during open registration. Tags are \$2.50 per bundle (approximately 100 tags per bundle).

Flyers announcing this year's fair will be available for distribution, please only one (1) copy per crafter.

Setup is Wednesday November 3rd. Fair dates are Thursday November 4th, Friday November 5th and Saturday November 6th.

Open Registration

Tuesday, June 1st

2:30 PM to 5:00 PM

Main Plant Cafeteria (35th St NE)

(please use the Credit Union entrance)

AND

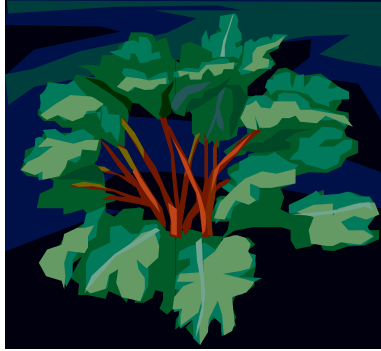
Tuesday, June 8th

2:30 PM to 5:00 PM

Main Plant Cafeteria (35th St NE)

(please use the Credit Union entrance)

If you cannot make one of these registration dates, please contact Jan O'Brien at 377-8111 after Tuesday June 8th to set up an appointment.



Here's one of my favorite rhubarb recipes. It's a cake with rhubarb mixed into the batter and cinnamon and sugar on the top:

RHUBARB CAKE

Mix together:

1 egg
1 1/2 c sugar 1/2 c veg oil
1 c sour milk 1 tsp. vanilla
(to make sour milk, add 1 tsp white vinegar to milk)

Sift:

1 tsp. soda
2 c flour

Beat until smooth & add:

2 cups cut rhubarb (I usually use 3 cups)

Pour into greased and floured pan (9 x 13).

Sprinkle top with cinnamon and sugar and dot with butter. --- Don't forget this step.

Bake 45 min in 350 oven.

Best if served cool with whipped cream or Cool Whip.



Friends are like fabric – you can never have enough !

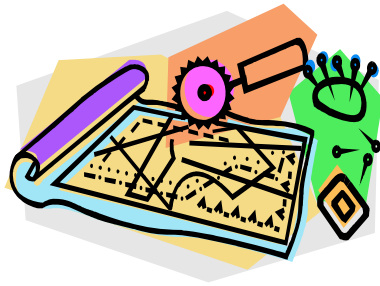
I am a material girl. Wanna see my fabric collection?



Sewing Expo

It's still the first weekend in June, but they have gotten the price down to \$55 for the entire Saturday of classes. Friday prices are additional if you go that day too. They really made an effort to get more local area teachers. Many are from Iowa, Wisconsin and Illinois. There are a few from out of state. If you did not get a booklet in the mail, you can go to this site and print it or even sign up online.

http://www.uwplatt.edu/cont_ed/sewing_expo/index.html



When life goes to tpieces — Try Quilting !

2010-2011 Officers

Club President

Shari Burns

366-4774 H / 295-8711 W

slburns1@rockwellcollins.com

Secretary/Historian

Jean Strait

363-1688

jean82400@aol.com

Membership/Address Changes

Patti Little

295-3812 W / 373-0272

pslittle@rockwellcollins.com

Tour Coordinators

Esther Miceli 393-7200

Thelma Goetsch 396-2700

Vice President

Esther Miceli

393-7200

Treasurer

Dee Roman

365-4512 H / 295-8310 W

diroman@rockwellcollins.com

Newsletter/Address Changes

Shari Burns

366-4774 H / 295-8711 W

slburns1@rockwellcollins.com

Community Service Projects

Arlys Huff 854-6263

Joyce Smith 377-3143

<http://www.collinsclubs.com/craftclub/>